



THE STATE  
*of* **ALASKA**  
GOVERNOR MIKE DUNLEAVY

## Department of Natural Resources

### Division of Forestry & Fire Protection

Mat-Su/Southwest Area Forestry  
101 Airport Road  
Palmer, AK 99645-6445  
Main: 907.761.6289  
Fax: 907.761.6213

The holidays are approaching, and Alaskans are starting to decorate for the festive season. For many, the tree can be a focal point of holiday decorations. Several retailers sell Christmas trees, however, there are some folks who prefer to venture out to select and cut their own tree. If you are one of those people, the Alaska Division of Forestry provides for this holiday tradition.

Cutting Christmas trees on unrestricted state lands in the Matanuska Valley Moose Range and the Matanuska and Susitna valleys is allowed with some stipulations. Cutting of trees is prohibited in state parks and Department of Transportation (DOT) rights-of-way. It is also prohibited on Alaska Native lands and other private property.

It is important to properly identify land ownership where you intend to cut your tree. See the maps below for more detailed tree cutting areas. If you have any questions regarding landownership, consult the Division of Forestry Area office in Palmer at 907-761-6300.

No permit or fee is required to cut a Christmas tree. Trees must be no more than 15 feet tall and only one tree per household is allowed. Trees should be cut as low to the ground as possible.

Christmas trees cut on state land are for personal use only and may not be sold. Please do not litter and be courteous to other tree cutters and/or residents who live in the area.

Keep in mind, the Division of Forestry does not maintain forest roads. Anyone traveling on forest roads should have appropriate gear and equipment in the event they become stuck. This includes tire chains, a shovel, tow strap and warm clothing.

For more information, contact the Alaska Division of Forestry, Mat-Su Area Office at 101 Airport Road, Palmer, Alaska or call 907-761-6300.

There are other public lands in the Matanuska-Susitna valleys and surrounding areas where cutting of Christmas trees is allowed. To find out more information about cutting trees in the Chugach National Forest and Matanuska-Susitna Borough, be sure to visit their websites.

**HAVE A SAFE AND HAPPY HOLIDAY!**

## Mat-Su Valley Christmas Tree Cutting Area

## Mat-Valley Moose Range



## Trailhead

## Trails

## Forestry Roads



Active



Inacti



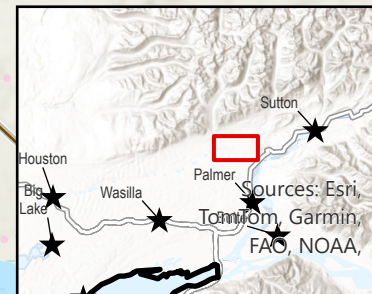
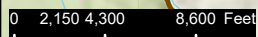
Closed



Propo



Non-F



Sources: Esri, TomTom, Garmin, FAO, NOAA, USGS, © OpenStreetMap contributors, and the GIS User Community, Alaska Department of Natural Resources, Esri, USGS, Alaska Division of Forestry and Fire

Created by: S. Nickel 11/19/2025 12:35 PM